

PHOTOPLATES

PLATE - I



Main entrance of Bijni Raj Palace



Bhairabendra Narayan Deb, the last ruler of Bijni Raj Estate

PLATE - II

Royal emblem of Bijni Raj Dynasty



Photo of *Narayane Tanka* (Money which was in circulation in the Bijni Raj Estate during early part of Bijni Dynasty)

PLATE - III

Ruins of Lalmati Ganesh Temple where Bijni *Rajas* granted *Devottar* land



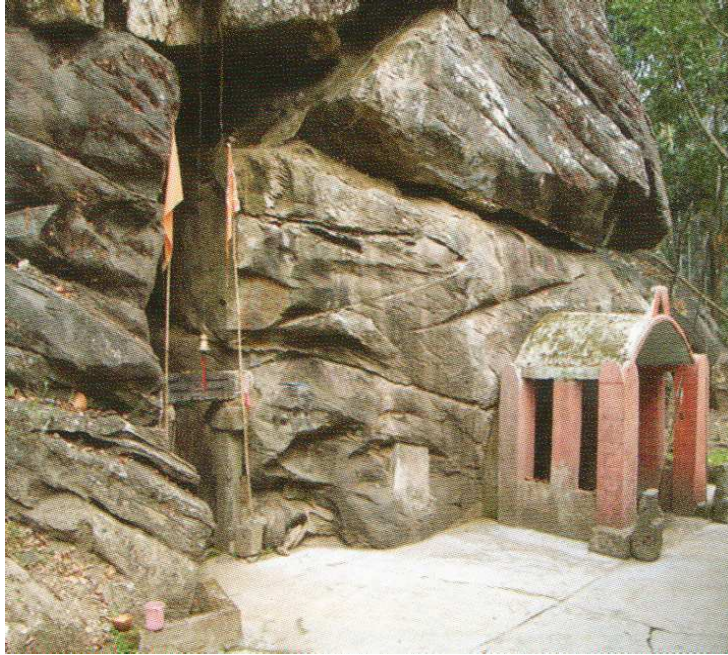
Stone carved idols preserved in Ganesh Temple of Abhayapuri

PLATE - IV

Present view of Sengkal Mahakal Temple established by the Bijni *Rajas*



Trisula or *Barsha* of Sengkal Mahakal Temple which was received by the Bijni *Raja* from the *Raja* of Bhutan

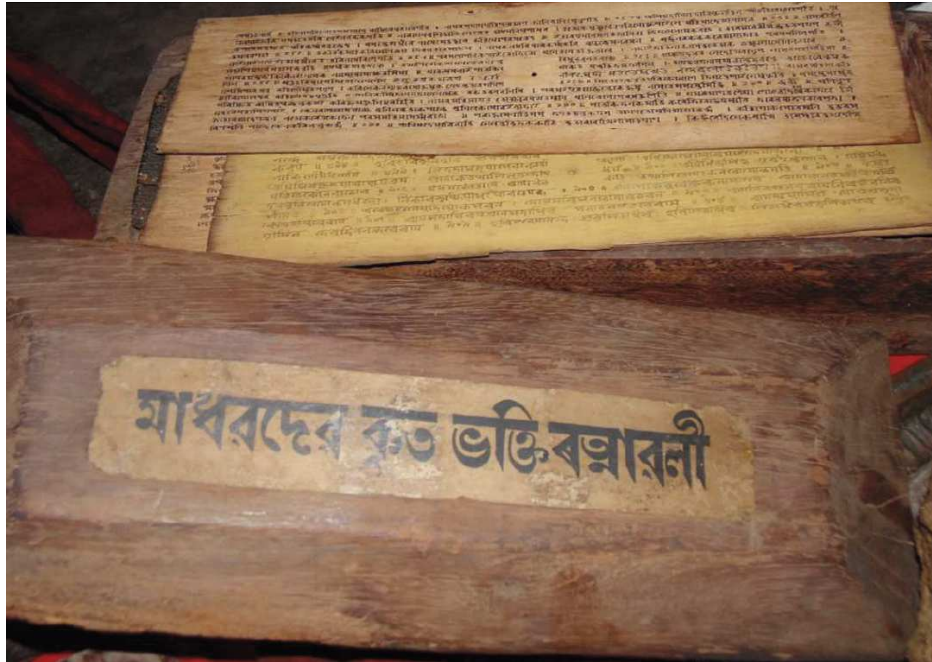
PLATE - V

Cave temple of Jogighopa



Photo of *Singhasan* which was donated by *Bijni Raja* to the Bagheswari Temple

PLATE - VI



Sanchipat (old manuscript) written by Guru Sankardeva and Madhabdeva which are still preserved at Bishnupur Satra



Paduka (wooden slipper) and *Padasila* (footprint) preserved at Bishnupur Satra

PLATE - VII

Main Entrance of Dharmapur Satra, Abhayapuri

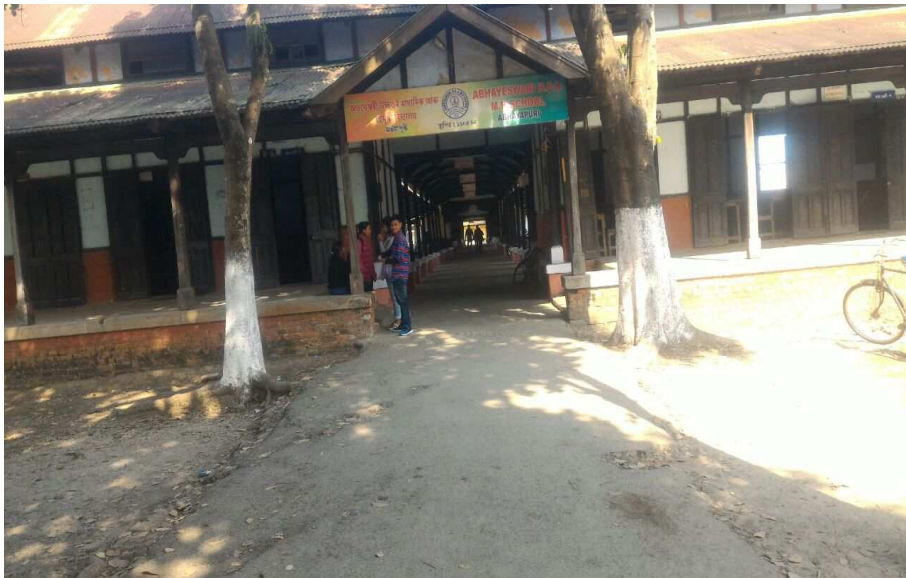


Photo of Abhayeswari Higher Secondary School of Abhayapuri

PLATE - VIII

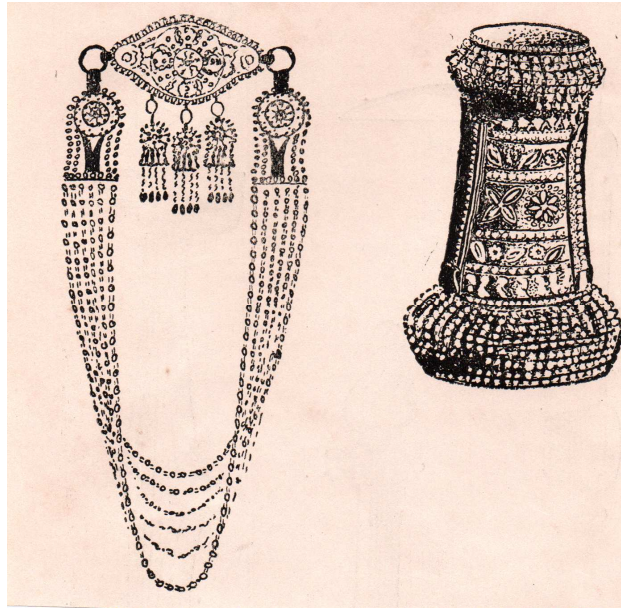
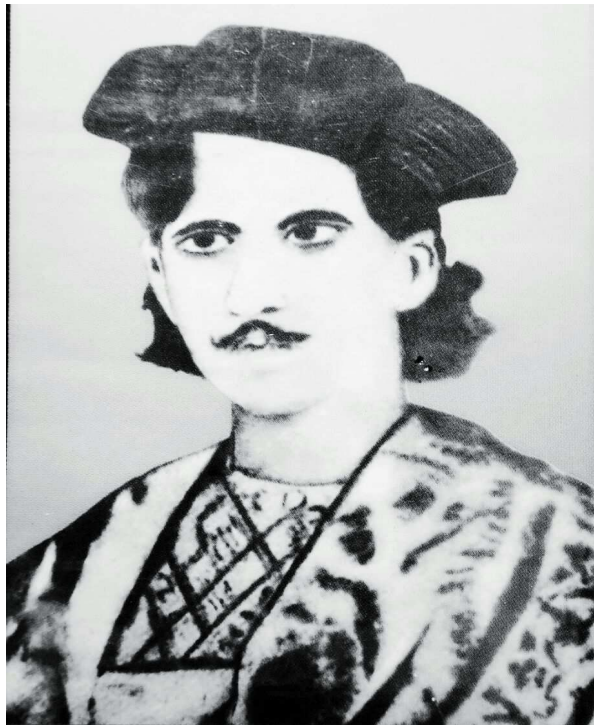


Photo of 'Chandrahari' and 'Muthakharu' (ornaments used by the women of Bijni Raj Estate)



Anandaram Dhekial Phukan, *Dewan* of Bijni Raj Estate